



Immunoβeta®



**BIOLIVE**  
healthy & natural products

# Immunoβeta®

**Immunoβeta®**  
IS AN IMMUNOSTIMULATING  
AND EUTROPHIC PREBIOTIC  
ON THE INTESTINAL TISSUE

## The prebiotic action is due to

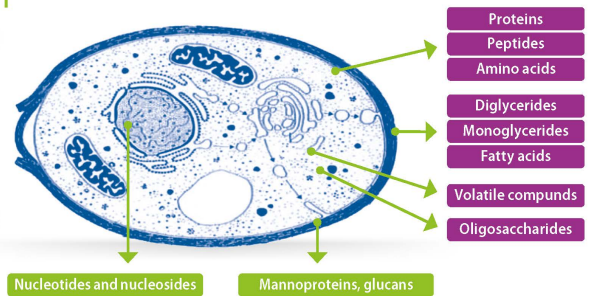
- Three main compounds of the cell being isolated and selected in terms of quality during the production stage
- Their chemical purity, physical quantity and concentration
- Their synergic action

## Composition

**β-GLUCANS 30%**  
**Mannanligosaccharides (MOS) 25%**  
**NUCLEOTIDES 7%**

**Immunoβeta®** is obtained from selected strains of *Saccaromyces Cervisiae* yeast, through a process of enzyme autolysis at controlled temperature.

Each single compound is then selected, dosed and stabilized to keep its features unaltered.



## Indications

### IT STIMULATES THE NON-SPECIFIC IMMUNO RESPONSE

It acts by activating macrophages and lymphocytes and plays a binding activity against pathogenic bacteria and mycotoxins. The incidence of infective diseases and enteritis becomes a minor problem and the animal's general conditions improve. Today prebiotics seem to represent the most interesting nutritional preventive measure limiting the use of antibiotics. The animals fed on MOS present indices of pathologies significantly low compared to the untreated groups.<sup>(A)</sup>

### IT INCREASES THE DIGESTIBILITY OF FEEDS BY STIMULATING THE ACTIVITY AND FUNCTIONALITY OF THE INTESTINAL TISSUE

#### The intestinal villi increase in length.

The feeds containing **Immunoβeta®** administered to the animal determine better conversion indices, thus reducing malabsorption and food intolerance phenomena.<sup>(B)</sup>

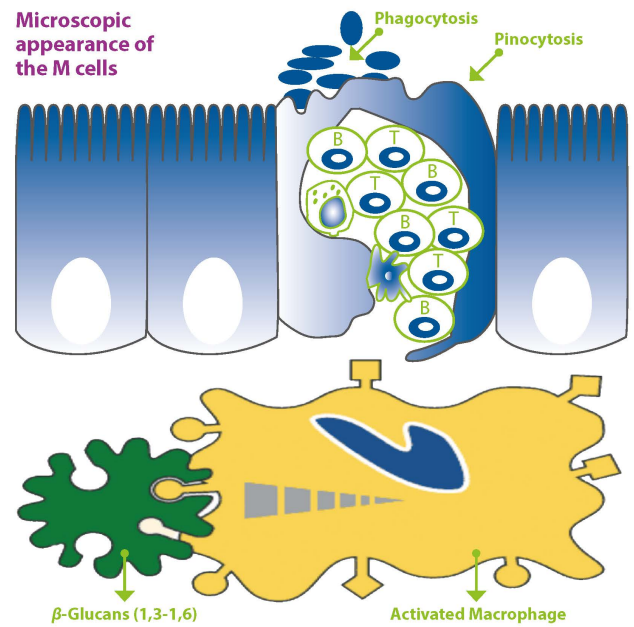
<sup>(A)</sup>Fonseca et al., 2004. <sup>(B)</sup>Martinez-Puig et al., 2007 – Mourau et al., 2006).

## $\beta$ -GLUCANS 30%

The  $\beta$ -GLUCANS are phagocytised by the M cells of the intestinal mucosa and act as antigens, by activating macrophages and lymphocytes.

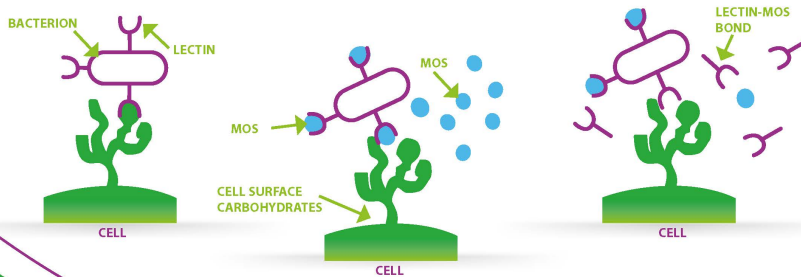
1,3-1,6- $\beta$ -GLUCAN obtained from the cell wall of the *Saccharomyces Cerevisiae* yeast is the most active  $\beta$ -GLUCAN in the stimulation of the immune system.

The  $\beta$ -GLUCANS bind to a specific receptor of the macrophages, by activating the immune cascade mechanism.

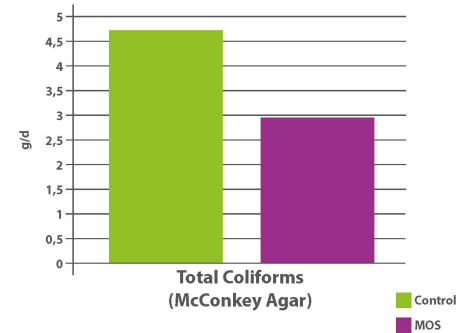


## Mannanligosaccharides (MOS) 25%

The Mannanligosaccharides (MOS) play a binding role against those pathogenic bacteria expressing mannose-specific lectins and towards mycotoxins such as aflatoxin and zearalenone. They play a prebiotic action for the development of beneficial intestinal bacteria.



EFFECT OF THE MOS ON THE COUNT OF TOTAL COLIFORMS IN CALF FAECES (Mourau et al., 2006)

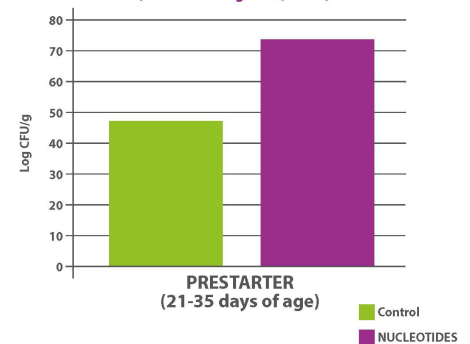


The MOS block the colonization of Gram-negative pathogens and help maintaining a healthy balance of the intestinal microbism.

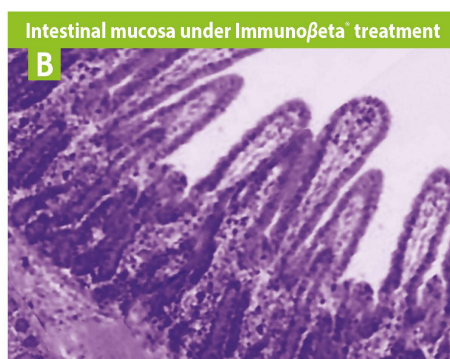
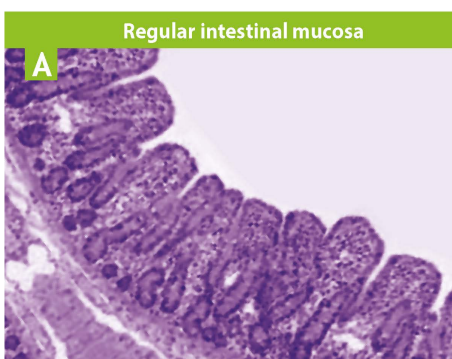
## NUCLEOTIDES 7%

The NUCLEOTIDES are important compounds of enzymes and cofactors such as ATP and FAD and represent key micronutrients for tissues with high cell replication index such as the intestinal mucosa (intestinal villi) and the immune system (lymphocytes).

PRODUCTIVE PERFORMANCE OF PIGLETS BEING WEANED EARLY UNDER EXPERIMENTAL CONDITIONS (Martinez-Puig et al., 2007)



The productive parameters improve thanks to the better development of both intestinal mucosa and immune system. Stress and delayed growth are also reduced.





POWDER

20  
kg

BAG

**Immunobeta®****COMPOSITION**

**Brewer's yeast**  
(*Saccharomyces Cerevisiae*)

and its extracts (1,3-1,6  $\beta$ -glucans,  
manno-oligo-saccharides, nucleotides)

**Analytical components:**

Crude protein	<b>35,00%</b>
Raw fat	<b>3,40%</b>
Crude fiber	<b>0,20%</b>
Crude ash	<b>7,65%</b>
Lysine	<b>0,15%</b>
Methionine	<b>0,20%</b>
Sodium	<b>0,06%</b>

**Warnings:**

Store in the original packaging, in a cool and dry place, away from light and temperature changes.

Close the package after use.

# Immunobeta®

**COMPLEMENTARY FEED in POWDER**  
**for ALL ANIMAL SPECIES**

**DOSAGE and USAGE:**

Accurately mix the product with feed at the following doses:

**BROILERS:** 200-400 g per 100 kg of complete feed.

**TURKEYS:** 200 g per 100 kg of complete feed.

**HENS and other breeding animals:** 200-400 g per 100 kg of complete feed.

**SOWS:** 200-400 g per 100 kg of complete feed.

**PIGLETS:** 200-400 g per 100 kg of complete feed.

**GROWING SWINE:** 100-200 g per 100 kg of complete feed.

**DAIRY COWS:** 20-30 g/head/day.

**CALVES:** 5-15 g/head/day.

**SHEEP and GOATS:** 4-6 g/head/day.

**LAMBS and KIDS:** 8 g/head/day.

**FISH:** 50-200 g per 100 kg of complete feed.

**RABBITS:** 100-400 g per 100 kg of complete feed.

**DOGS:** 100-200 g per 100 kg of complete feed.

**CATS:** 50-200 g per 100 kg of complete feed.

**ORNAMENTAL BIRDS:** 50-100 g per 100 kg of complete feed.

**FAMI Qs**